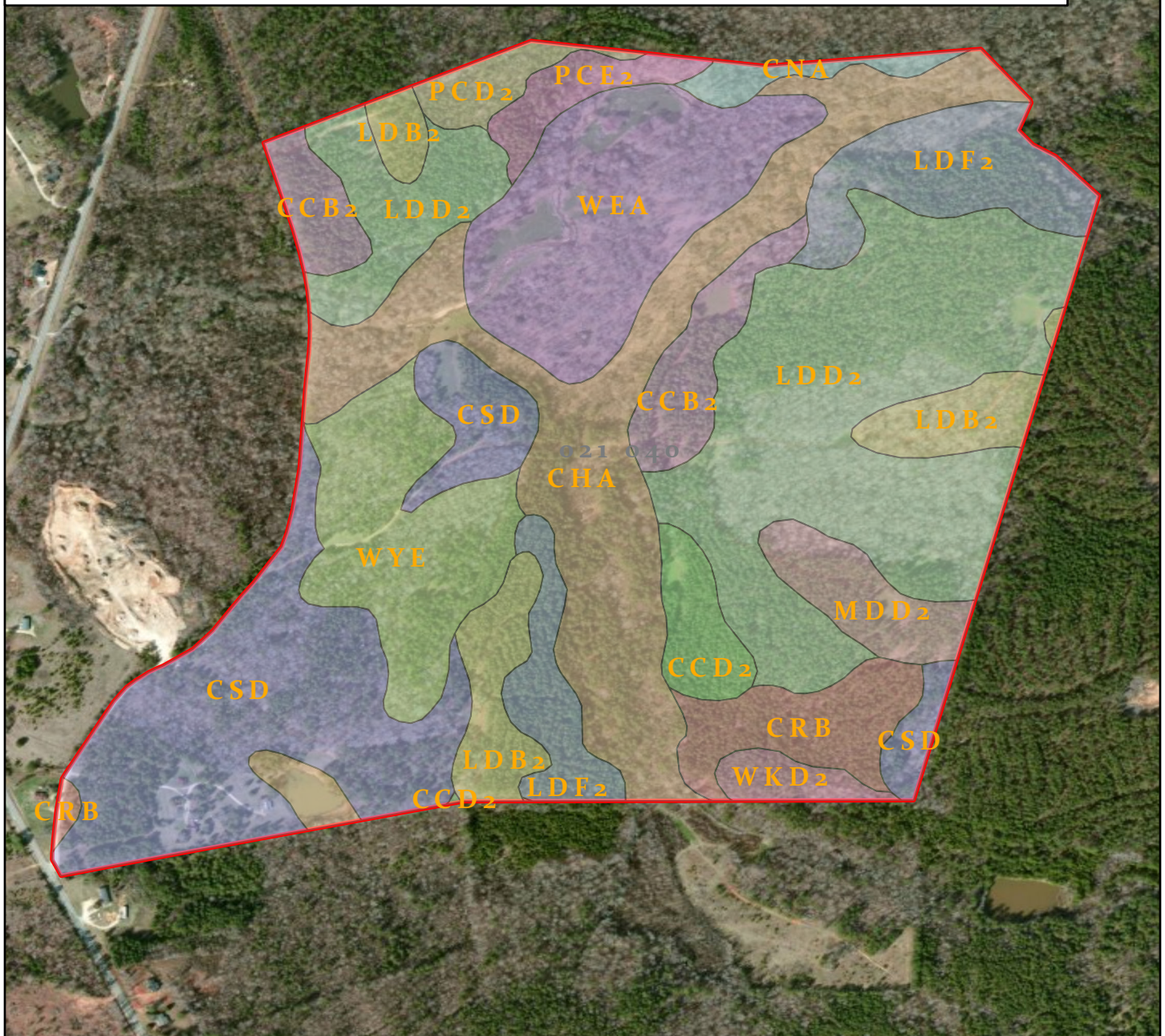


Legend

MUSYM,MapunitName

CcB2,Cataula-Cecil complex, 2 to 6 percent slopes, moderately eroded	LdF2,Lloyd gravelly loam, 15 to 30 percent slopes, moderately eroded
CcD2,Cataula-Cecil complex, 6 to 15 percent slopes, moderately eroded	MdD2,Madison-Bethlehem complex, 2 to 15 percent slopes, moderately eroded
ChA,Chewacla silt loam, 0 to 2 percent slopes, frequently flooded	PcD2,Pacolet sandy loam, 6 to 15 percent slopes, moderately eroded
CnA,Congaree silt loam, 0 to 3 percent slopes, occasionally flooded	PcE2,Pacolet sandy loam, 15 to 25 percent slopes, moderately eroded
CrB,Crawfordville loamy sand, 2 to 6 percent slopes	WeA,Wehadkee loam, 0 to 2 percent slopes, frequently flooded
CsD,Crawfordville-Sedgefield complex, 6 to 15 percent slopes	WkD2,Wynott-Wilkes-Enon complex, 2 to 15 percent slopes, moderately eroded
LdB2,Lloyd gravelly loam, 2 to 6 percent slopes, moderately eroded	WyE,Wynott-Wilkes-Winnsboro complex, 15 to 25 percent slopes
LdD2,Lloyd gravelly loam, 6 to 15 percent slopes, moderately eroded	 Subject Property



Taliaferro County GA | 264 Ac +/-
Gridded Soil Survey - Map Units



JACK R FRANKHOUSER, ALC
 REALTOR/FORESTER
 ACCREDITED LAND CONSULTANT
 912-678-5920 | GH.LAND.COM

2022

Coordinate System: GCS WGS 1984

Center: 82.9166°W 33.6036°N

