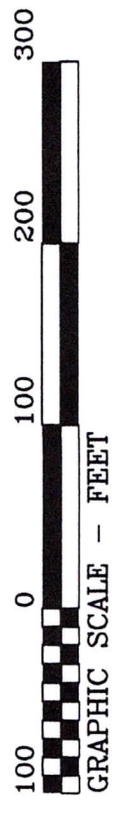


The information contained herein was obtained from sources deemed reliable, but no liability is assumed by Green Hill Land & Timber, LLC for errors or omissions. Purchasers are encouraged to independently evaluate all characteristics of the herein-described property.

Survey Prepared By  
**Poythress Land Surveying, Inc**

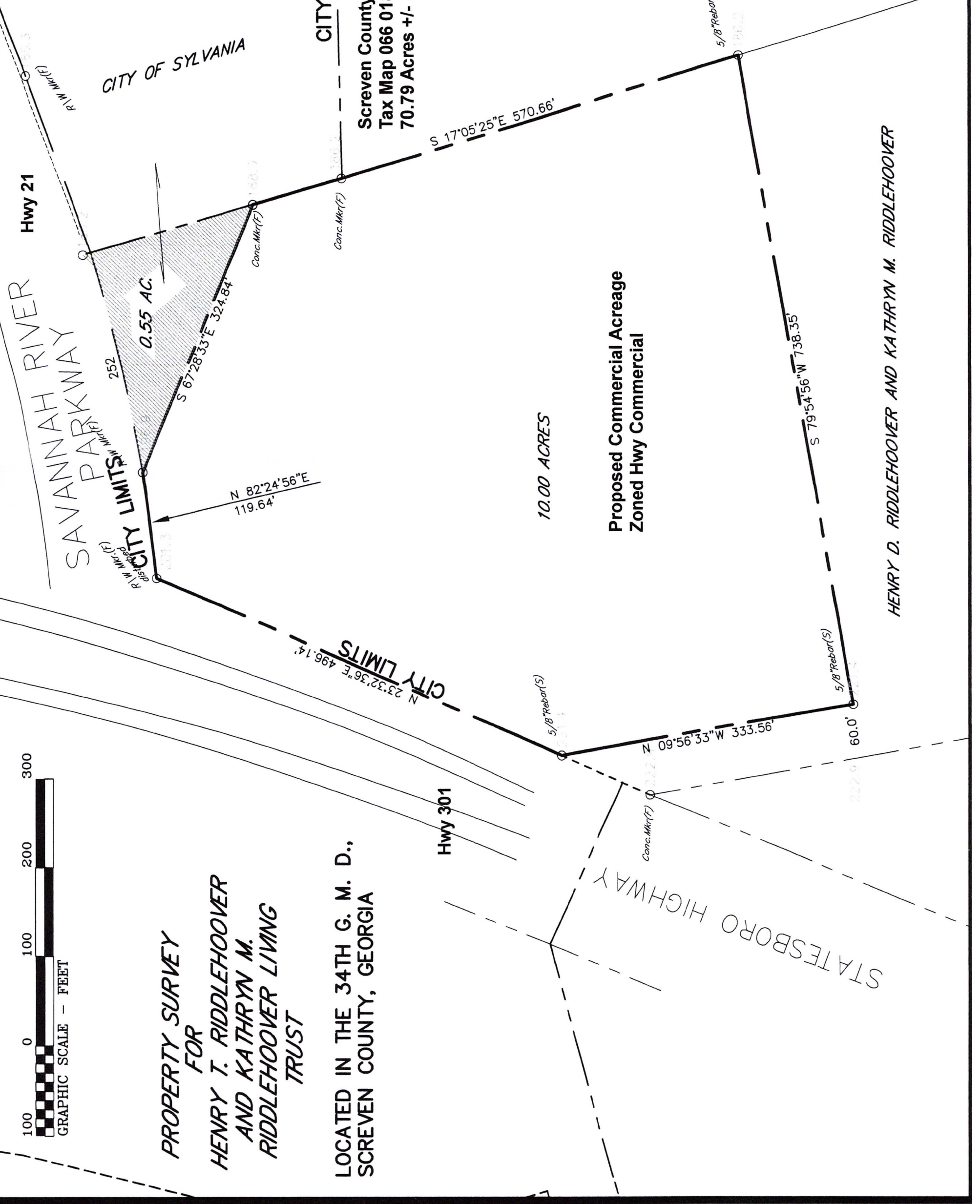
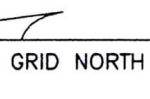


**PROPERTY SURVEY FOR HENRY T. RIDDLEHOOPER AND KATHRYN M. RIDDLEHOOPER LIVING TRUST**

**LOCATED IN THE 34TH G. M. D., SCREVEN COUNTY, GEORGIA**

**CITY LIMITS**

Scriven County GA  
Tax Map 066 018  
70.79 Acres +/- includes 10 Acre Commercial



RUDOLPH AND LOVETT GROSS

HENRY D. RIDDLEHOOPER AND KATHRYN M. RIDDLEHOOPER

STATESBORO HIGHWAY

Hwy 301

Hwy 21

SAVANNAH RIVER PARKWAY

CITY OF SYLVANIA

0.55 AC.

10.00 ACRES

Proposed Commercial Acreage  
Zoned Hwy Commercial

CITY LIMITS

CITY LIMITS

CITY LIMITS

CITY LIMITS

CITY LIMITS

CITY LIMITS

CITY LIMITS

CITY LIMITS

CITY LIMITS

CITY LIMITS

CITY LIMITS

CITY LIMITS