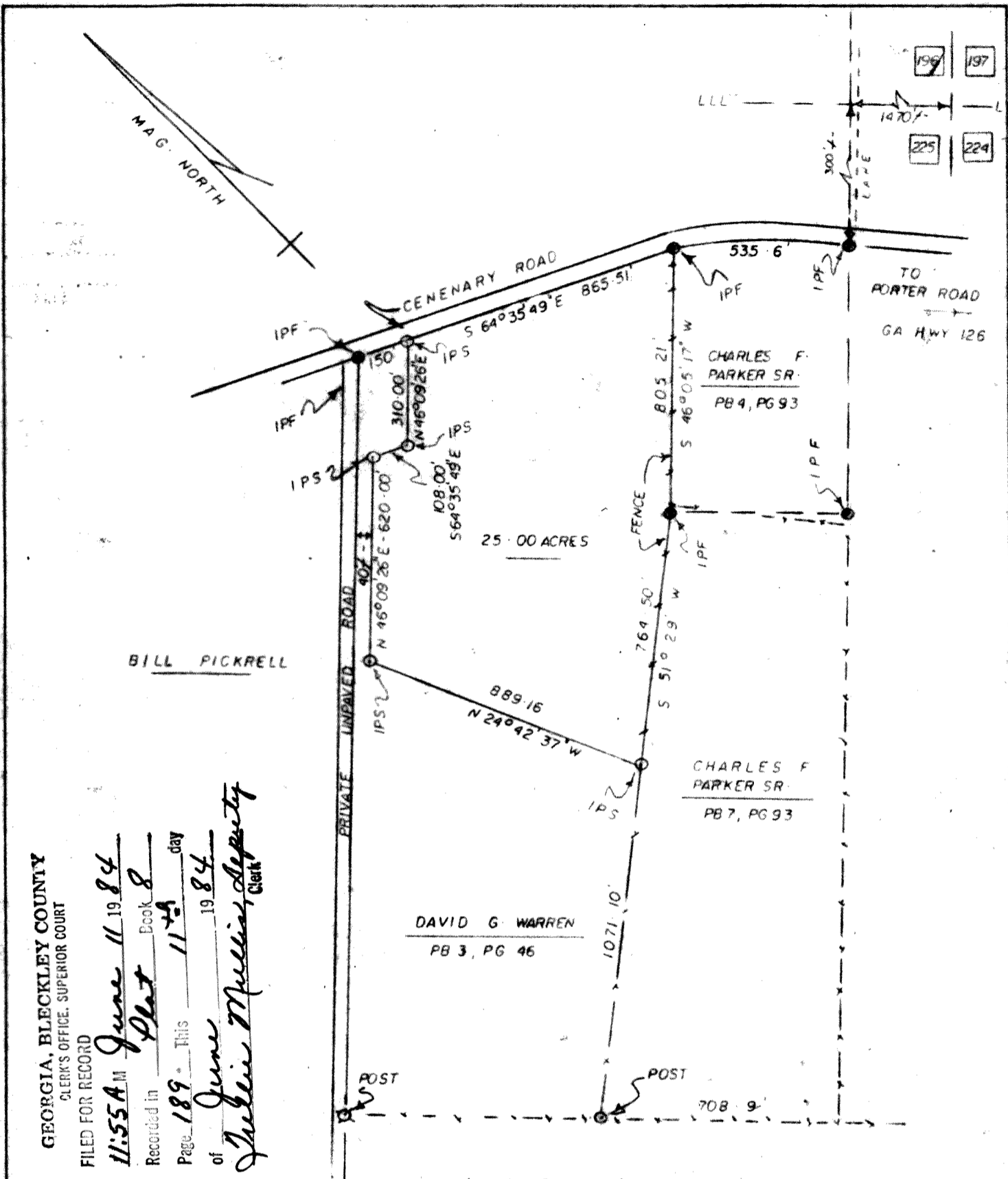


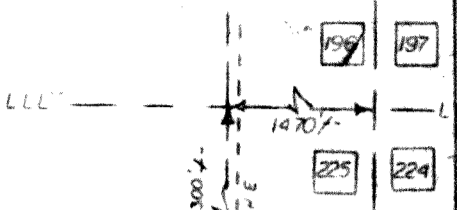
ch



GEORGIA, BLECKLEY COUNTY  
 CLERK'S OFFICE, SUPERIOR COURT  
 FILED FOR RECORD  
 11:55 A.M. June 11 1984  
 Recorded in Book 8  
 Page 189 This 11th day  
 of June 1984  
 of *Judith Mullins, Deputy Clerk*

DAVID G. WARREN  
 PB 3, PG 46

CHARLES F. PARKER SR.  
 PB 7, PG 93



J. A. D. COLEY



GRAPHIC SCALE IN FEET

1" = 400'

I P F ● = IRON PIN FOUND  
 I P S ○ = IRON PIN SET

This field data upon which this map or plot is based  
 has a closure precision of 1 foot in \_\_\_\_\_ feet  
 and an angular error of 0° 0' 0" per angle point, and  
 was adjusted using COMPASS rule.

This map or plot has been calculated for closure and  
 is accurate within 1 foot in 14,540 feet.

The type of equipment used to obtain the measurements  
 are as follows:

Linear Measurements E D M I  
 Angular Measurements TOPCON G.T.S. 2

*John W Dye*



PROPERTY SURVEY	
FOR	
CHARLES PRESTON PARKER SR & NANCY R. PARKER	
LL 225 — 21LD	
BLECKLEY COUNTY	GEORGIA
JOHN W DYE SURVEYING SERVICE	
COCHRAN, GEORGIA	
SCALE: 1" = 400'	DATE: 5-29-1984
J 2817 PB 174	