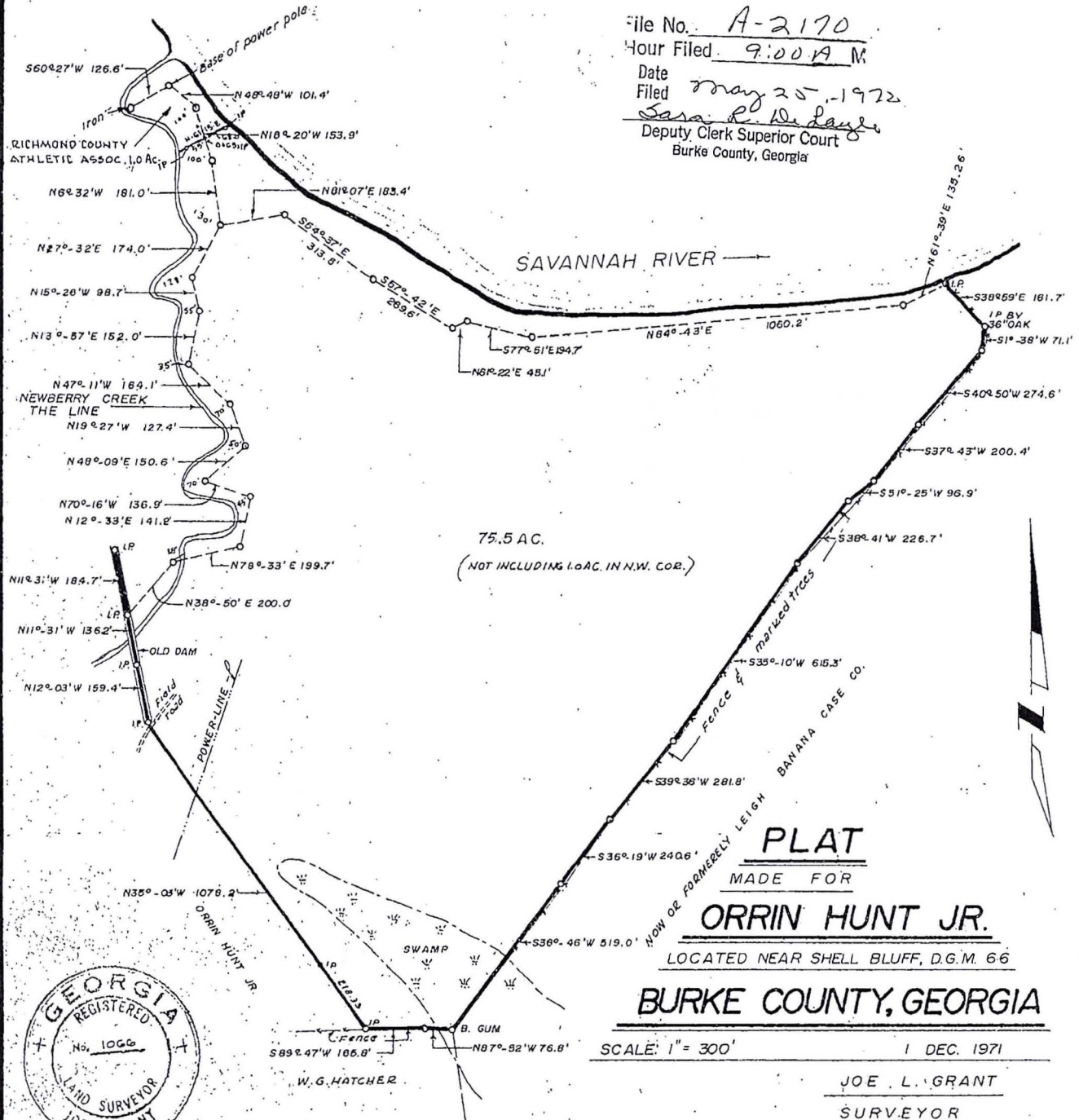


File No. A-2170
 Hour Filed 9:00 AM
 Date May 25, 1972
 Filed Sara R. DeLoach
 Deputy Clerk Superior Court
 Burke County, Georgia



75.5 AC.
 (NOT INCLUDING 1.0 AC. IN N.W. COR.)

PLAT
 MADE FOR
ORRIN HUNT JR.
 LOCATED NEAR SHELL BLUFF, D.G.M. 66
BURKE COUNTY, GEORGIA

SCALE: 1" = 300'
 1 DEC. 1971
 JOE L. GRANT
 SURVEYOR
 NORTH AUGUSTA, S.C.



B. GUM
 889°47'W 185.8'
 N87°52'W 76.8'
 W.G. HATCHER

RICHMOND COUNTY
 ATHLETIC ASSOC. 1.0 AC.

NEWBERRY CREEK
 THE LINE

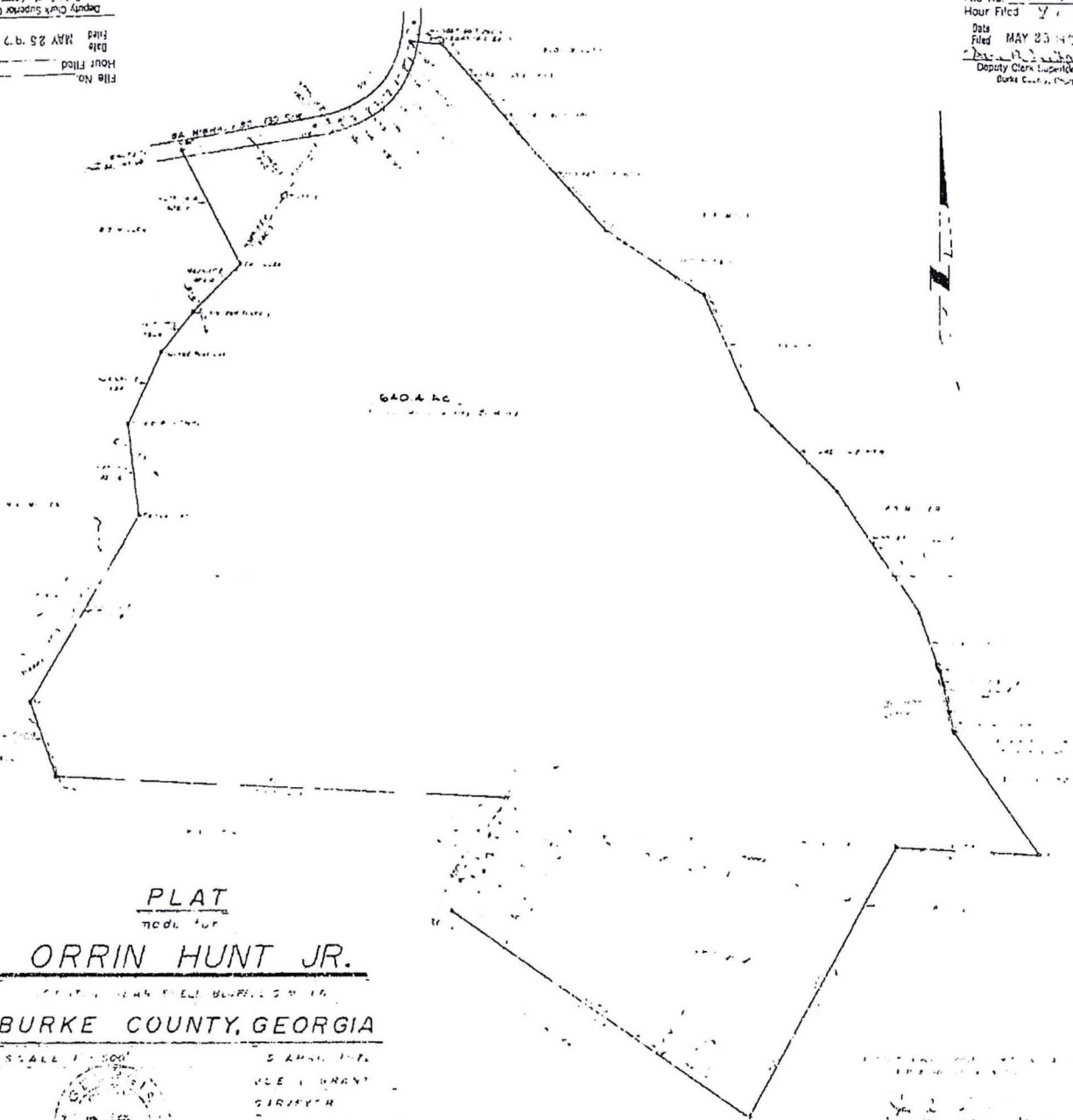
marked trees
 FENCE
 BANANA CASE CO.
 NOW OF FORMERLY LEIGH

SWAMP

POWER LINE
 OLD DAM
 ORRIN HUNT JR.

Deputy Clerk Superior Court
Date Filed MAY 25 1972
Hour Filed
File No. M

File No. **A-2169**
Hour Filed 7:30
Date Filed MAY 25 1972
Deputy Clerk Superior Court
Burke County, Georgia



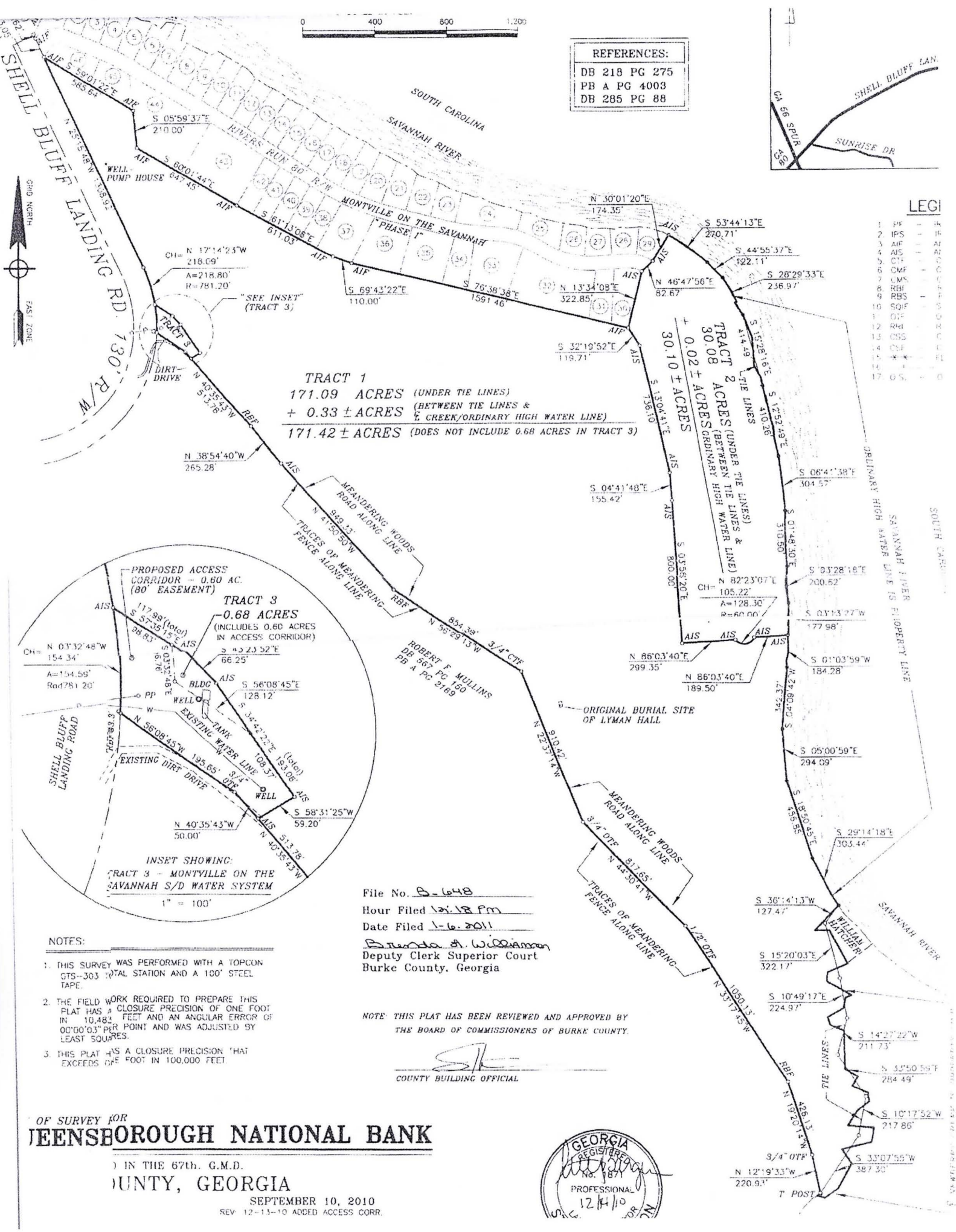
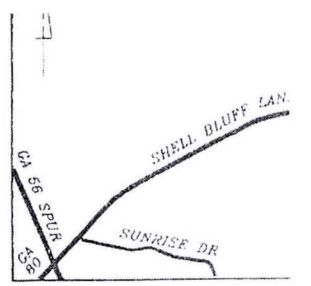
PLAT
NO. 100
ORRIN HUNT JR.
OF THE COUNTY OF BURKE, GEORGIA
BURKE COUNTY, GEORGIA

SCALE 1" = 500'
5 APR 1972
J. W. HUNT
SIRBYCH
NORTH 40° 30' 00" E





REFERENCES:	
DB 218 PG 275	
PB A PG 4003	
DB 285 PG 88	



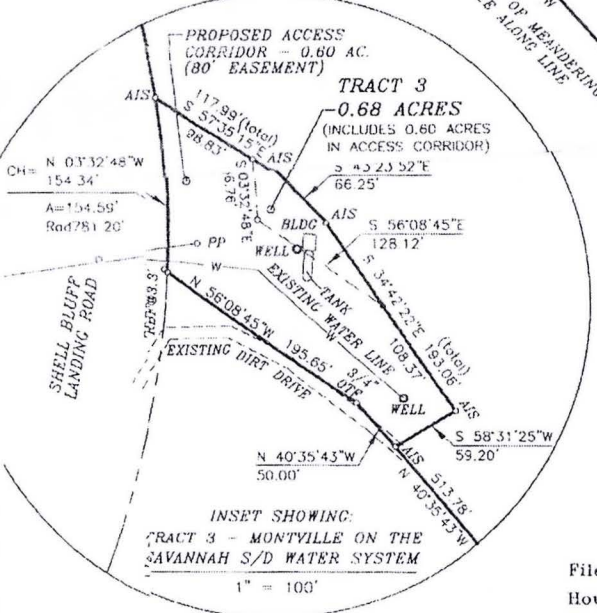
LEGI

1	PF
2	IFS
3	AFS
4	OS
5	CMF
6	CVS
7	RBI
8	RBS
9	SQF
10	OTF
11	RRI
12	RRI
13	OSL
14	OTF
15	OTF
16	OTF
17	OS

TRACT 1
 171.09 ACRES (UNDER THE LINES)
 + 0.33 ± ACRES (BETWEEN THE LINES & CREEK/ORDINARY HIGH WATER LINE)
 171.42 ± ACRES (DOES NOT INCLUDE 0.68 ACRES IN TRACT 3)

TRACT 2
 30.08 ACRES (UNDER THE LINES)
 + 0.02 ± ACRES (BETWEEN THE LINES & ORDINARY HIGH WATER LINE)
 30.10 ± ACRES

TRACT 3
 0.68 ACRES (INCLUDES 0.60 ACRES IN ACCESS CORRIDOR)



File No. B-648
 Hour Filed 12:18 Pm
 Date Filed 1-6-2011
Barbara A. Williamson
 Deputy Clerk Superior Court
 Burke County, Georgia

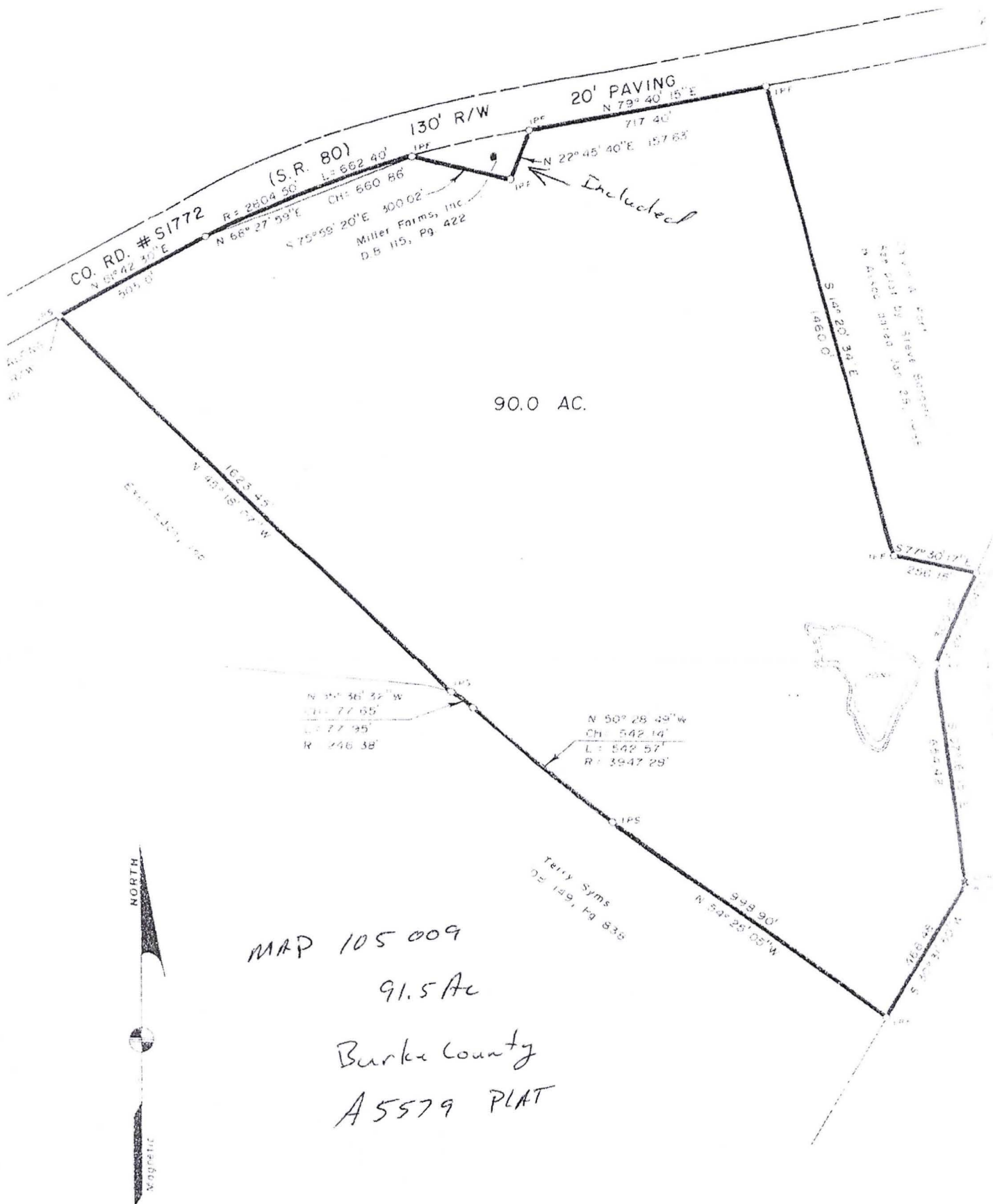
NOTE: THIS PLAT HAS BEEN REVIEWED AND APPROVED BY THE BOARD OF COMMISSIONERS OF BURKE COUNTY.

[Signature]
 COUNTY BUILDING OFFICIAL

- NOTES:
- THIS SURVEY WAS PERFORMED WITH A TOPCON GTS-303 TOTAL STATION AND A 100' STEEL TAPE.
 - THE FIELD WORK REQUIRED TO PREPARE THIS PLAT HAS A CLOSURE PRECISION OF ONE FOOT IN 10,482 FEET AND AN ANGULAR ERROR OF 00'00"03" PER POINT AND WAS ADJUSTED BY LEAST SQUARES.
 - THIS PLAT HAS A CLOSURE PRECISION THAT EXCEEDS ONE FOOT IN 100,000 FEET.

OF SURVEY FOR
JEENSBOROUGH NATIONAL BANK
) IN THE 67th. G.M.D.
) COUNTY, GEORGIA
 SEPTEMBER 10, 2010
 REV. 12-15-10 ADDED ACCESS CORR.





90.0 AC.

MAP 105 009
 91.5 Ac
 Burke County
 A 5579 PLAT



URVEY

DINE F. MAHAFFIE

NOTES

- 1 THIS PROPERTY DOES NOT LIE WITHIN A FLOOD PLAIN
- 2 THIS SURVEY WAS PERFORMED WITH A TERNI SECOND THEODOLITE, A TOPCON SW 4200 METER, AND A 100' STEEL TAPE