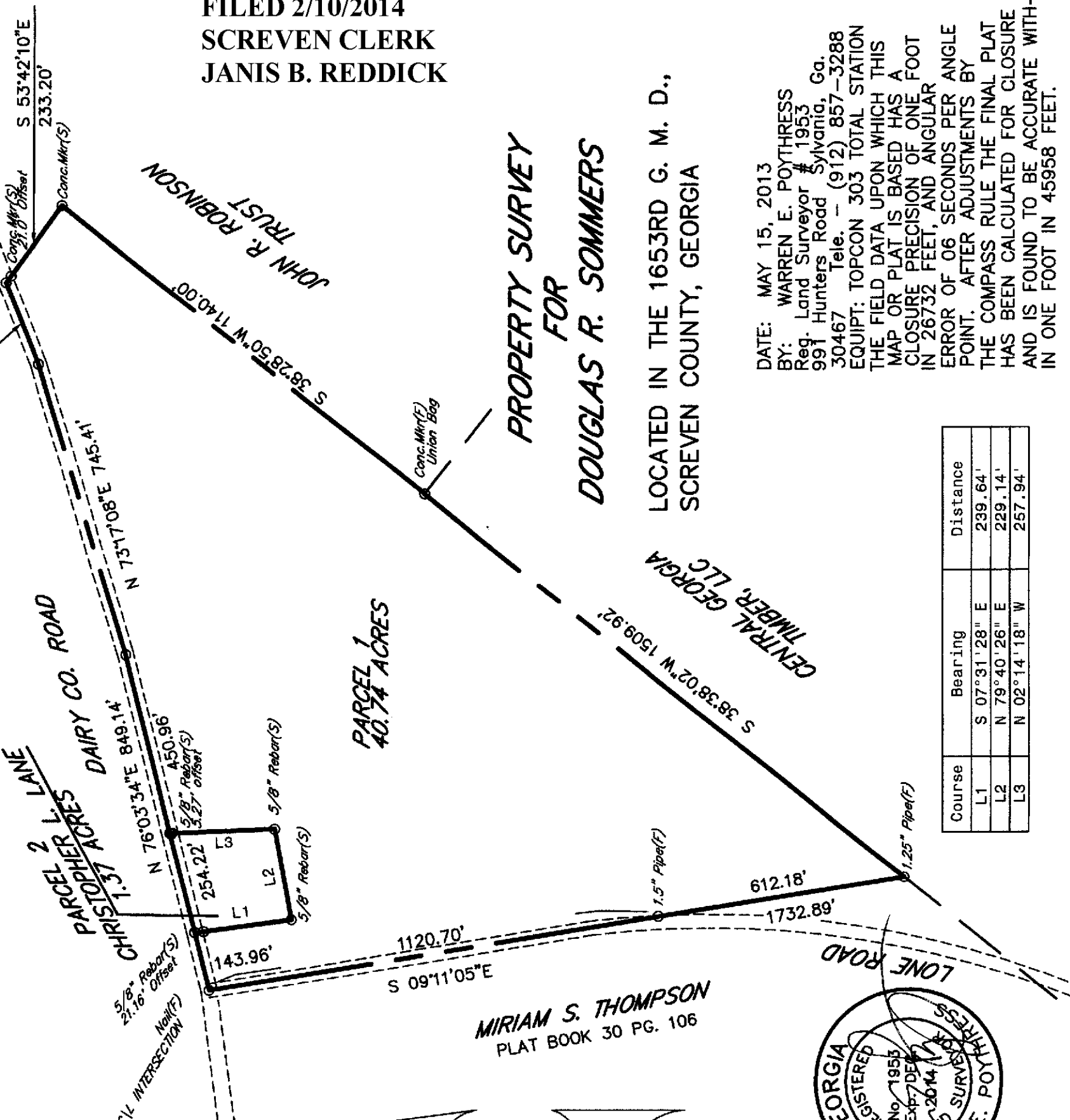


FILED 2/10/2014
 SCREVEN CLERK
 JANIS B. REDDICK



**PROPERTY SURVEY
 FOR
 DOUGLAS R. SOMMERS**
 LOCATED IN THE 1653RD G. M. D.,
 SCREVEN COUNTY, GEORGIA

DATE: MAY 15, 2013
 BY: WARREN E. POYTHRESS
 Reg. Land Surveyor # 1953
 991 Hunters Road Sylvania, Ga.
 30467 Tele. - (912) 857-3288
 EQUIPT: TOPCON 303 TOTAL STATION
 THE FIELD DATA UPON WHICH THIS
 MAP OR PLAT IS BASED HAS A
 CLOSURE PRECISION OF ONE FOOT
 IN 26732 FEET, AND ANGULAR
 ERROR OF 06 SECONDS PER ANGLE
 POINT. AFTER ADJUSTMENTS BY
 THE COMPASS RULE THE FINAL PLAT
 HAS BEEN CALCULATED FOR CLOSURE
 AND IS FOUND TO BE ACCURATE WITH-
 IN ONE FOOT IN 45958 FEET.

Course	Bearing	Distance
L1	S 07°31'28" E	239.64'
L2	N 79°40'26" E	229.14'
L3	N 02°14'18" W	257.94'

MIRIAM S. THOMPSON
 PLAT BOOK 30 PG. 106

MAGNETIC NORTH

BK 35 PG 81A

