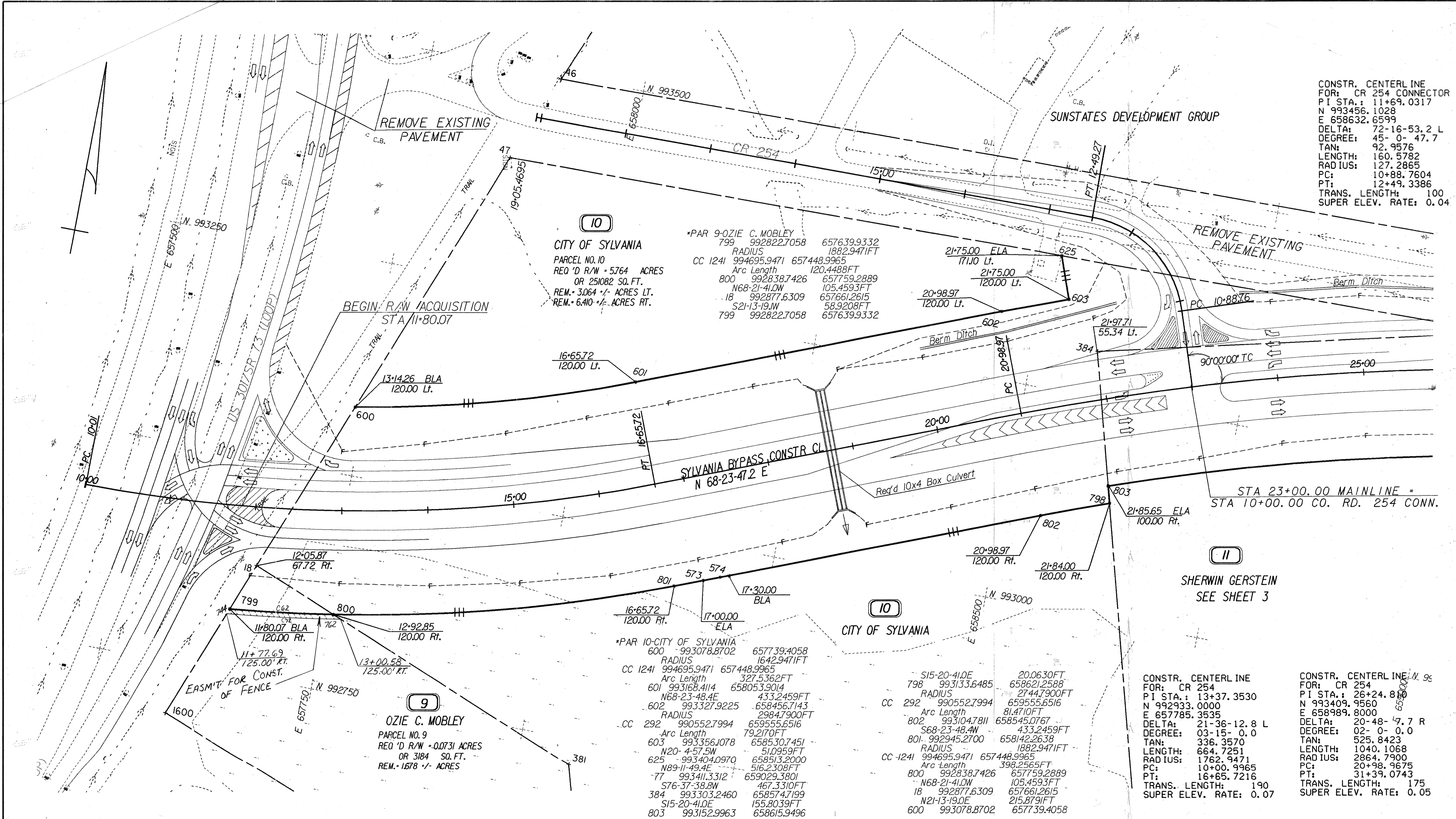


CONSTR. CENTERLINE  
 FOR: CR 254 CONNECTOR  
 PI STA.: 11+69.0317  
 N 993456.1028  
 E 658632.6599  
 DELTA: 72-16-53.2 L  
 DEGREE: 45- 0- 47.7  
 TAN: 92.9576  
 LENGTH: 160.5782  
 RADIUS: 127.2865  
 PC: 10+88.7604  
 PT: 12+49.3386  
 TRANS. LENGTH: 100  
 SUPER ELEV. RATE: 0.04



**10**  
 CITY OF SYLVANIA  
 PARCEL NO. 10  
 REQ'D R/W - 5.764 ACRES  
 OR 251082 SQ. FT.  
 REM. - 3.064 +/- ACRES LT.  
 REM. - 6.410 +/- ACRES RT.

\*PAR 9-OZIE C. MOBLEY  
 799 992822.7058 657639.9332  
 RADIUS 1882.9471 FT  
 CC 1241 994695.9471 657448.9965  
 Arc Length 120.4488 FT  
 800 992838.7426 657759.2889  
 N68-21-41.0W 105.4593 FT  
 18 992877.6309 657661.2615  
 S21-13-19.1W 58.9208 FT  
 799 992822.7058 657639.9332

\*PAR 10-CITY OF SYLVANIA  
 600 993078.8702 657739.4058  
 RADIUS 1642.9471 FT  
 CC 1241 994695.9471 657448.9965  
 Arc Length 327.5362 FT  
 601 993168.4114 658053.9014  
 N68-23-48.4E 433.2459 FT  
 602 993327.9225 658456.7143  
 RADIUS 2984.7900 FT  
 CC 292 990552.7994 659555.6516  
 Arc Length 79.2170 FT  
 603 993356.1078 658530.7451  
 N20-4-57.5W 51.0959 FT  
 625 993404.0970 658513.2000  
 N89-11-49.4E 516.2308 FT  
 77 993411.3312 659029.3801  
 S76-37-38.8W 467.3310 FT  
 384 993303.2460 658574.7199  
 S15-20-41.0E 155.8039 FT  
 803 993152.9963 658615.9496

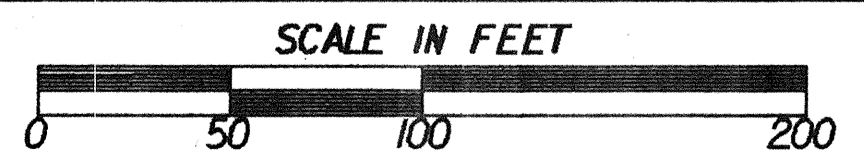
S15-20-41.0E 20.0630 FT  
 798 993133.6485 658621.2588  
 RADIUS 2744.7900 FT  
 CC 292 990552.7994 659555.6516  
 Arc Length 81.4710 FT  
 802 993104.7811 658545.0767  
 S68-23-48.4W 433.2459 FT  
 801 992945.2700 658142.2638  
 RADIUS 1882.9471 FT  
 CC 1241 994695.9471 657448.9965  
 Arc Length 398.2565 FT  
 800 992838.7426 657759.2889  
 N68-21-41.0W 105.4593 FT  
 18 992877.6309 657661.2615  
 N21-13-19.0E 215.8791 FT  
 600 993078.8702 657739.4058

CONSTR. CENTERLINE  
 FOR: CR 254  
 PI STA.: 13+37.3530  
 N 992933.0000  
 E 657785.3535  
 DELTA: 21-36-12.8 L  
 DEGREE: 03-15- 0.0  
 TAN: 336.3570  
 LENGTH: 664.7251  
 RADIUS: 1762.9471  
 PC: 10+00.9965  
 PT: 16+65.7216  
 TRANS. LENGTH: 190  
 SUPER ELEV. RATE: 0.07

CONSTR. CENTERLINE  
 FOR: CR 254  
 PI STA.: 26+24.850  
 N 993409.9560  
 E 658989.8000  
 DELTA: 20-48- 7.7 R  
 DEGREE: 02- 0- 0.0  
 TAN: 525.8423  
 LENGTH: 1040.1068  
 RADIUS: 2864.7900  
 PC: 20+98.9675  
 PT: 31+39.0743  
 TRANS. LENGTH: 175  
 SUPER ELEV. RATE: 0.05

PROPERTY AND EXISTING R/W LINE  
 REQUIRED R/W LINE  
 CONSTRUCTION LIMITS  
 EASEMENT FOR CONSTR  
 & MAINTENANCE OF SLOPES  
 EASEMENT FOR CONSTR OF SLOPES  
 EASEMENT FOR CONSTR OF DRIVES

BEGIN LIMIT OF ACCESS.....BLA  
 END LIMIT OF ACCESS.....ELA  
 LIMIT OF ACCESS  
 REQUIRED R/W AND LIMIT OF ACCESS



NOTE:  
 ALL STATIONS AND OFFSETS  
 ARE TAKEN FROM THE CONSTRUCTION  
 CENTERLINE UNLESS NOTED OTHERWISE.

DATE	REVISIONS	DATE	REVISIONS
7-1-91	PAR 9-ADDED FENCE EASMT.		
5-6-91	PAR 10-REV ACCESS BREAK		

LAND LOT NO.	
LAND DISTRICT	
GMD 34	
9-FEB-1990 02:14	
Z02: L202, 1111262170R01.DGN	

GEORGIA  
 DEPARTMENT OF TRANSPORTATION  
 RIGHT OF WAY MAP  
 PROJECT EDS-565 (5)  
 COUNTY SCREVEN  
 DATE 01-30-90 SH 2 OF 13